



Shown with optional porches and trellis. Solar panel look may vary from those shown.

Total Square feet
2,047

Bedrooms
3

Baths
2.5

Solar Village®: Your best choice for comfort, livability and energy efficiency.

We start by designing the home from the ground up. We work with you to position your home on its lot to take advantage of passive heating and cooling strategies. Thermal mass is built into every home to retain heat in the winter time and stay cool in the summer. Roof overhangs, awnings and landscaping are also designed to prevent summer heat gain and allow it in the winter.

Once all of these natural measures are taken, your Solar Village home is built to the highest standards in state-of-the-art facilities with top quality, environmentally friendly, sustainable and hi-efficiency products. Standard features include:

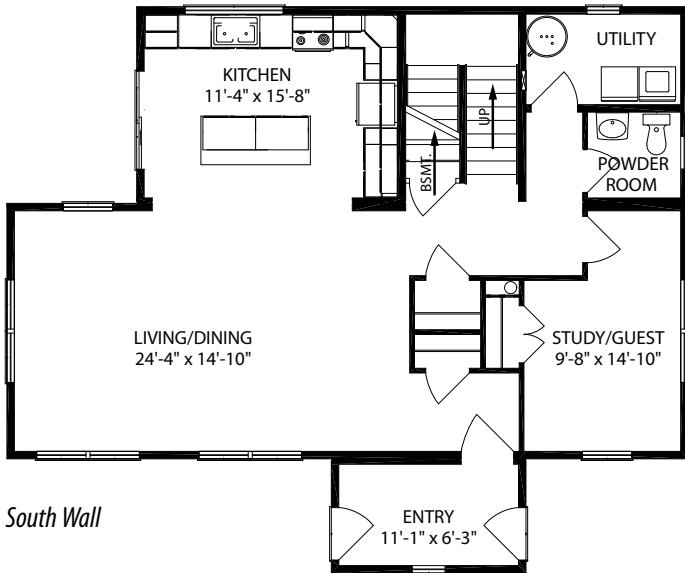
- 2.5 kw solar panels and solar hot water system for free solar power.
- High velocity heating and cooling system
- Compact fluorescent light fixtures to save electricity
- Fiberglass windows for hi-efficiency, durability and insulation value
- Cement board siding that will last for 50 years
- Exterior 2 x 6 walls with R21 spray foam insulation from Icynene® that prevents air infiltration and 1/2" foam board to reduce both thermal bridging and radiant heat gain.
- R49 roof insulation from a combination of foam and batt insulation
- 5/8" drywall for additional thermal mass and flatter walls.
- Harmony no VOC primer for healthy indoor air.
- Low flow plumbing fixtures for water conservation
- Ceramic tile in most rooms for healthier indoor air



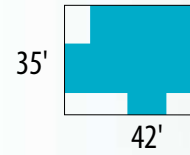


Altos Floor Plan

1st Floor – 1,158 Square Feet

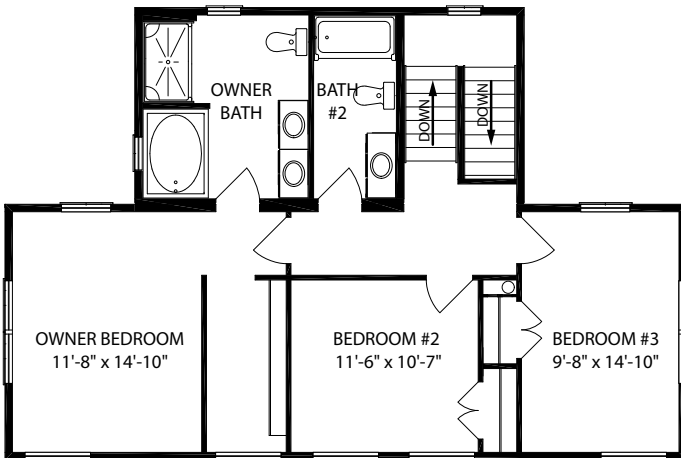


Building Footprint



South Wall

2nd Floor – 889 Square Feet



Optional upgrades available:

- Tankless hot water heater
- Bamboo or cork flooring
- Paperstone recycled paper countertops
- Space Pak energy recovery ventilators



Note: All Solar Village homes are designed and engineered for maximum energy efficiency and livability. In order to achieve the best performance, changes are not permitted to the building other than approved options supplied by All American Homes. In addition site orientation is critical and the south facing wall must face within + or - 20 degrees of due south. Solar Village® is a registered trademark of Solar Village Homes, LLC, and is used with permission. All rights reserved.